

Greenspace & Us



A zine by the Greenspace & Us girls





—free, for everyone to use

Greenspace & Us

A zine by the Greenspace & Us girls



Things are mostly for men, so we decided to make something for us.

We are a girls group, and we are human.

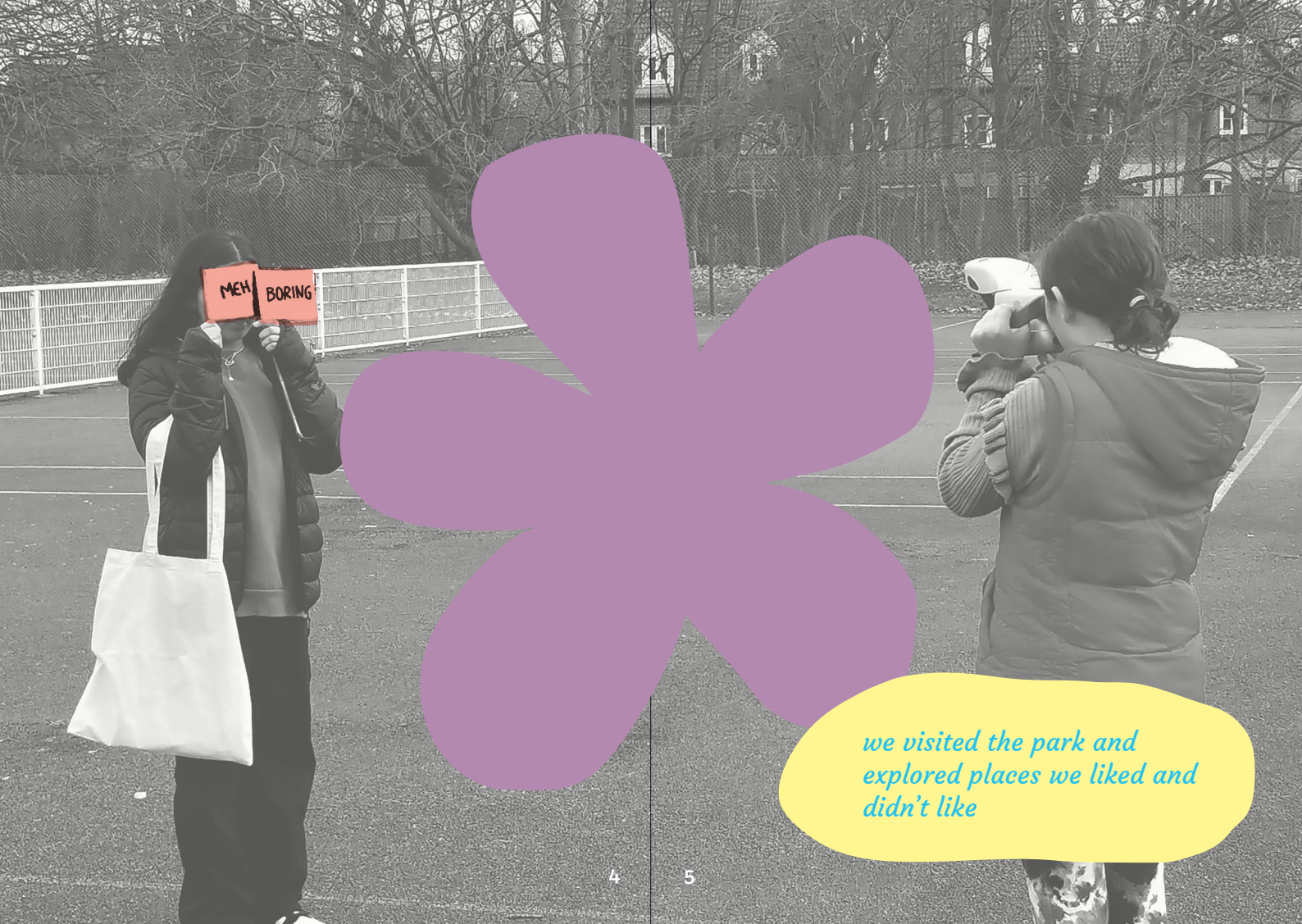
So far we've made a shelter but now we are designing & making a park.

It will be made by women for women, to help women.

It is safe, and people will support you. Everybody can be young at heart.

Space needs to be equal – two football pitches doesn't make a space for girls!





MEH BORING

we visited the park and explored places we liked and didn't like




the current space in the tarmac is boring

MEH

fences makes us feel caged in



A black and white photograph of a grassy area. A long, dark shadow is cast across the grass from the left side. A thin vertical pole is visible on the far left edge.

grassy areas for playing sports feel unsafe because we might get hit by a ball

A black and white photograph of a grassy field. Two orange signs with a rough, torn-edge border are placed on the grass. The top sign says 'BORING' and the bottom sign says 'UNSAFE'. Both signs are supported by thin metal stakes.

BORING

UNSAFE

when we walked across the nearby golfcourse, the male golfers made us feel really uncomfortable

WY PARK

In a final workshop we put all our ideas together into a vision of our ideal park

Information & rest zone

A social shelter with charging points, and an information board to orient visitors with a map of the park.

Chill zone

Treehouse, picnic benches and hammocks amongst foliage.

Fast paced play areas

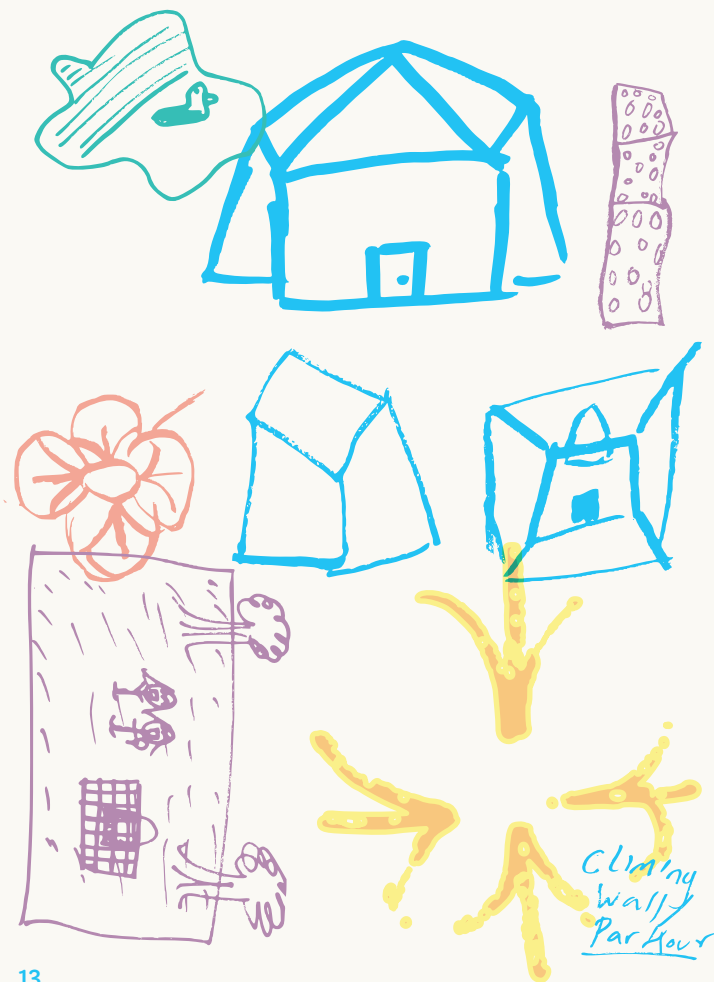
Zipwire, slides and trampolines - one for jumping, one for lying down. The park is bordered by a permeable graffiti wall which teenagers can use to express themselves. Toilets are at the back of the park out of the way.

Shared play zones

Basket swing & slides. Planters are used instead of fencing to border the area, so it doesn't feel caged in.

Water feature area

A natural pond with wildlife, hilly grassed areas and a round bench with planting in the centre.



*Fast paced
Play Areas*

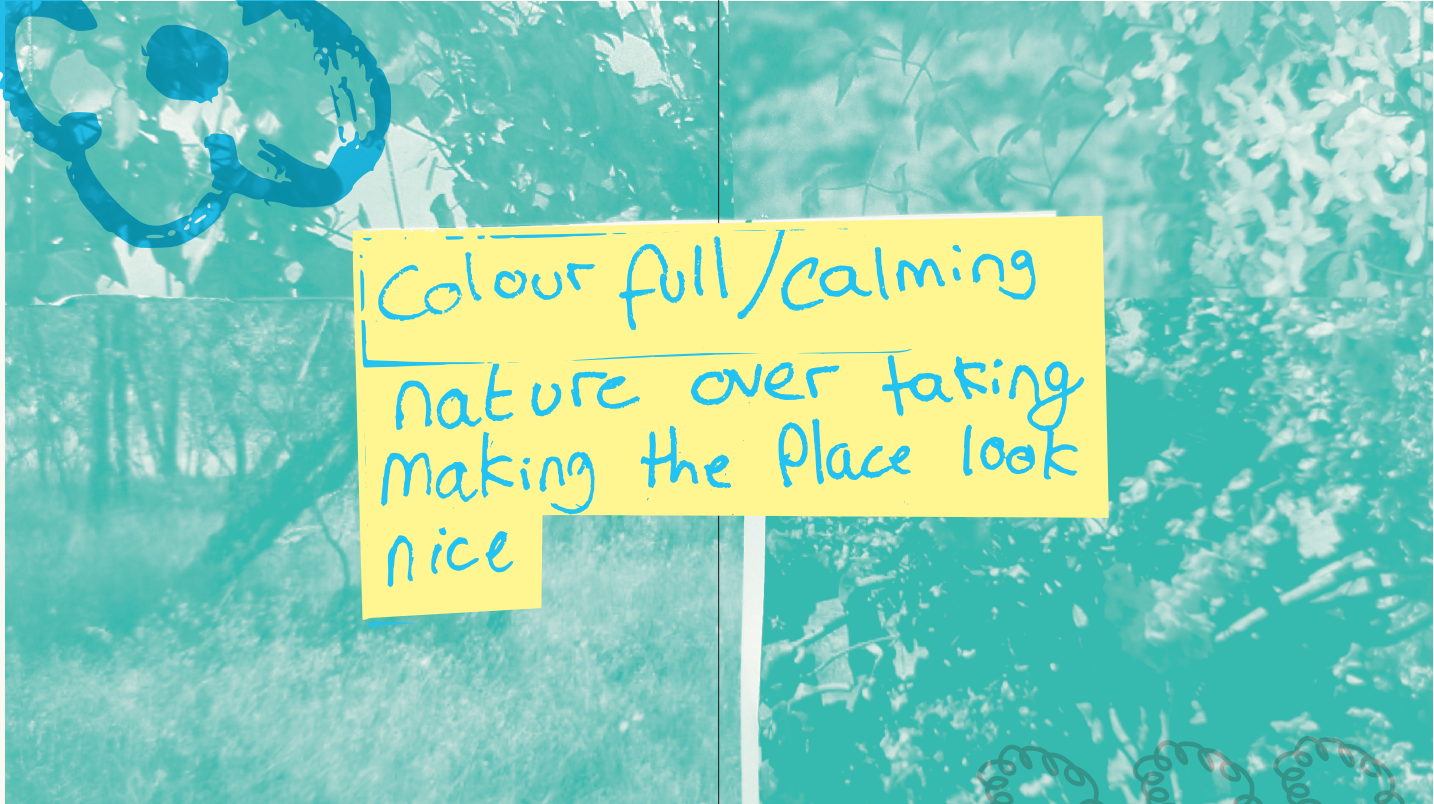
*Shared
Play Zones*

*Water &
Nature*

*Info &
Shelter*

Chill Zone





Colour full / calming
nature over taking
making the place look
nice

and
for relaxing
everyone





tyre swing



yay tree



*tree roots
and little
water falls*



I would like lots of trees for shade, so that there can be a perfect spot for picnics. We want everybody to be happy. And lots of entertainment. Lots of flowers and butterflies. And welcoming.

Safe we want the park to be safe and hopefully avoid violence, and for people to respect each other. To make people feel comfortable.

Fun we want people to enjoy it and have fun.

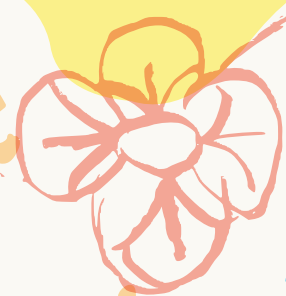
Different we want the park to be outstanding and to be different from any other park.

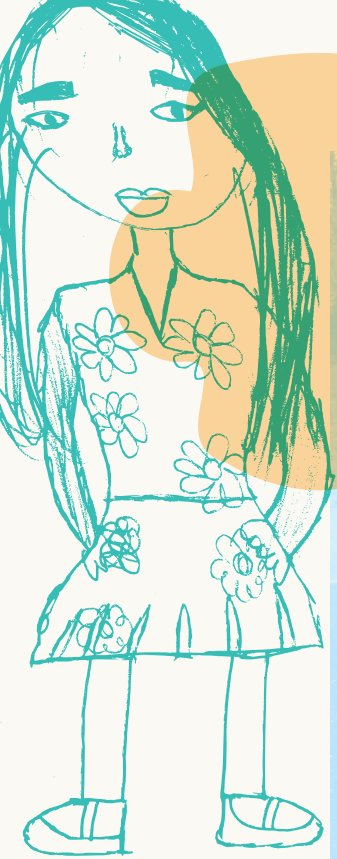
Welcoming we want any gender to access and any age to feel welcome.

Free we want it to be free for everyone to use.

Relaxing we want people to enjoy it and have fun and feel relaxed and to be at peace.

Friendly we want it to be a friendly environment and for everyone to enjoy it and respect one another.

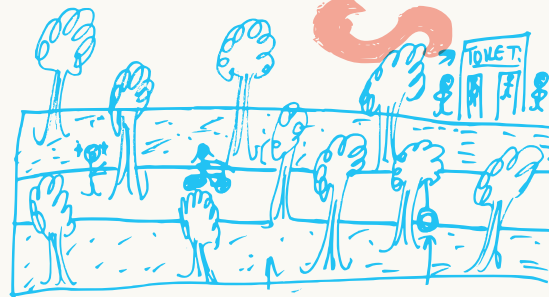




WELCOMING
colourful
SPACE



is



Green space

Greenspace & Us part 2 is a project engaging with teenage girls to understand their needs for more inclusive and accessible green space. Delivered in partnership with youth workers and the young women of NameIt Youth Project:

Miraaj Hussain

Hawwa Mahmoud

Safiah Draggon

Fena Atito

Kenzie Watson

Hafsa Ahmed

Fatima Ahmed

Mayaykha Ahmed

Eva Khan

Anniya Khan

Elvisia Gjepaii

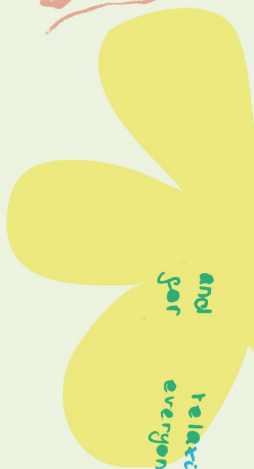
Bronwyn Thompson

Project produced in partnership by:



design by greenspace & us girls, nor and commonbooks.org





and
for
relaxing
everyone.



MY Ideal Park